

ECO INDUSTRIAL SUPPLIES

Installation Instructions for the EIS Freeway LED Retro Fit Street Light 80/100/120 Watt



Please read all installation instructions before attempting to retro fit.

A licenced electrician must perform the installation for the warrantee to be valid.

The warrantee card must be completed by the installing electrician & returned to EIS for registration.

Never touch the LED chips or allow them to be in contact with any surface or object.

WARNING... LED Chips are FRAGILE

Damage to the LED Chips are void under our warrantee terms & conditions.

Set Up!

Step 1. Always perform retro fitting in a clean environment free of dust.

Step 2. Remove all old wiring, control equipment, control equipment plate, reflectors, lamp & holder from the original street light housing.

Note; Please recycle or dispose of responsibly the old equipment. Reflectors may be aluminium, control gear & transformers contain rare metals & can be recycled as scrap metal. Globes most likely contain a gaseous mixture of vaporized mercury, other heavy poisonous metals & should not be disposed of in general waste.

There are local waste recyclers that can take disposal of your globes in a safe manner.

Step 3. Thoroughly clean the old street light housing so it is free of dirt & dust. Pay attention to the lens seal & hinging recess. **Replace any damaged lens seals or clips.** Avoid any solvents or chemical cleaners, warm soapy water & a sponge is the recommended method.

Step 4. Polish the acrylic lens with a soft cotton cloth inside & out.

Driver Assembly

Step 5. Remove the EIS Freeway LED Retro Fit Street Light & components from the box.

Step 6. Bolt the Meanwell LED driver to the supplied "EIS Freeway Retro Fit Street Light Driver Plate".

Step 7. Install LED Driver & plate into the old control box using the existing casted housing threaded mounting points with metal thread screws.



ECO INDUSTRIAL SUPPLIES

Installation Instructions for the EIS Freeway LED Retro Fit Street Light



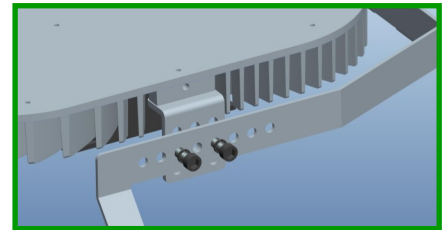
Installing The LED Lamp Head

Step 8. Remove the screws from the plastic protective cover ensuring not to touch the lamp face or allowing the lamp face to come in contact with any foreign object, work surface or bench top.

Step 9. With the lamp sitting in its plastic protective cover, attach the supplied L brackets to the top of the lamp.

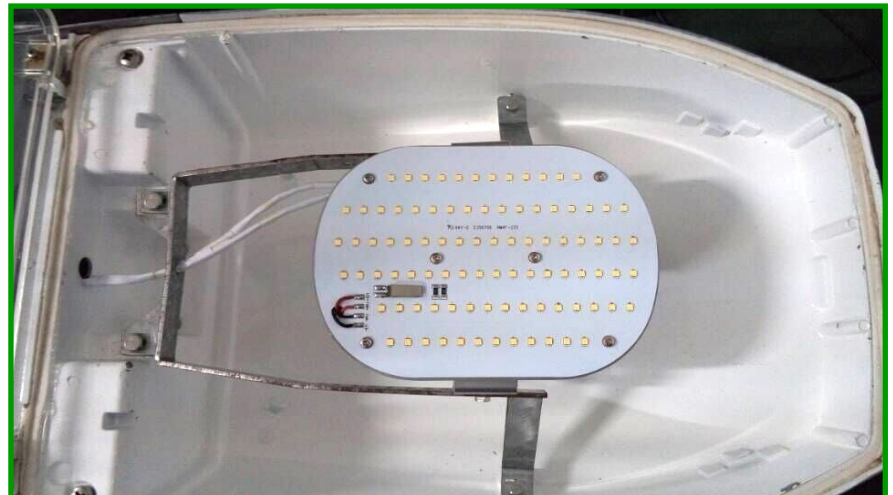
Step 10. Attach the supplied EIS Freeway Yolk bracket to the already mounted, side L brackets.

Step 11. Remove the plastic protective cover ensuring not to touch the LED surface face.



Thread the lamp wires through rubber grommets to the driver housing & fix the Freeway LED Retro Fit Street Light into place using the existing casted threaded mounts as shown here...

Make sure the lamp head is tilted parallel to what will be the road surface.



Step 12. Check for dust or any foreign objects & clip original lens cover into position ensuring there is a good seal & clips are in good working order.

Step 13. Connect the lamp wires red + & black - to the driver DC output corresponding wires using supplied connectors.

Step 14. Connect an earthed power cord to the driver AC input, turn on the power & bench test before final installation on top of light pole.

Step 15. Please fill out the warrantee card with all information & place it in the driver housing for the final installers to complete.

Step 16. Your Freeway LED Retro Fit Street Light is now ready for final installation.

ECO INDUSTRIAL SUPPLIES

Warranty Card & Lamp

EIS Freeway LED Retro Fit Street Light



Wattage...

Driver Serial #...

The Freeway LED Retro Fit Street Light has been bench tested, ready for mounting & final connection to the power supply. **Use only approved mains power connectors.**

Retro Fit Installation performed by Licenced Electrician

Company or Business Name...

Name...

Licence Number...

Dated...

Signature...

E-mail...

Phone Number...

Final Install

Do not touch the LED Chips

Remove warrantee card from driver box, fill in appropriate information & return to Eco Industrial Supplies once installed. EIS will inform you upon receipt of the warranty card. Your Freeway LED Retro Fit Street Light is now valid for an 8 year warrantee period. The warrantee covers failure of the lamp within this time frame under normal operating conditions. The warrantee period does not cover an "act of god" or damage occurred by extreme violent weather conditions. The warrantee does not cover damage to the LED chips caused by touching them or allowing them to come in contact with any foreign object. The warrantee does not cover any damage caused by lens seals that allow any leakage of moisture & dust into the lamp housing.

Country of install...

Install Location, Number, Roadway...

Installers Company/Authority Name...

Installed by Name...

Date...

Signature...

Phone Number...

Please scan this completed warrantee page & e-mail it to ecoindustrial@internode.on.net

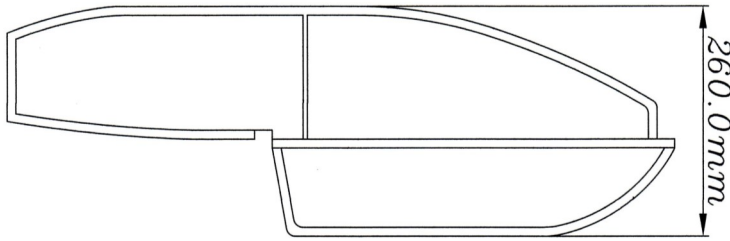
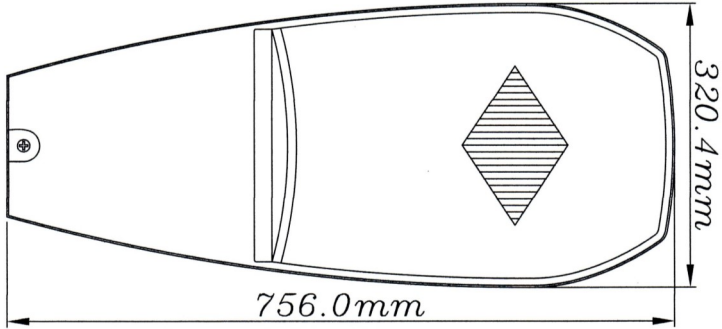
ECO INDUSTRIAL SUPPLIES

Pole Mounting Final Install for the

EIS Freeway LED Retro Fit Street Light



Overall Dimensions



**Pole Mounting Bolts
are to be tightened
with a calibrated
Torque Wrench to
17Nm**



Mounting height must not exceed 15 Metres

Compliance to IEC 60598.2.3 is as per the table below.

Freeway LED Retro Fit Street Light					
Model No.	Weight(KG) (including control gear)	overall dimensions L*W*H (mm)	S(m ²)	Torque (Nm)	the maximum mounting height (m)
EIS-Freeway-LED-40W	6.56	756*320.4*260	0.15	17	15
EIS-Freeway-LED-60W	6.56	756*320.4*260	0.15	17	15
EIS-Freeway-LED-80W	7.26	756*320.4*260	0.15	17	15
EIS-Freeway-LED-100W	7.26	756*320.4*260	0.15	17	15
EIS-Freeway-LED-120W	7.26	756*320.4*260	0.15	17	15
EIS-Freeway-LED-150W	7.86	756*320.4*260	0.15	17	15
EIS-Freeway-LED-185W	7.86	756*320.4*260	0.15	17	15
EIS-Freeway-LED-200W	7.86	756*320.4*260	0.15	17	15

Note: S is the area of the surface to be loaded (m²).